

The Acuity logo features the word "acuity" in a white, lowercase, sans-serif font. A green checkmark-like shape is integrated into the end of the letter "y".

acuity

The Sage Business Partner logo consists of the word "Sage" in green and "Business Partner" in white, both enclosed within a green rounded rectangular border.

Sage Business Partner



GUIDE

**Need to Upgrade from Sage 200?
Why Sage Intacct is the
logical next step**

Introduction

By downloading this guide, you're ready to evaluate whether Sage 200 is still the best accounting solution for the current and future financial management needs of your business.

We know it's a decision that can seem daunting, but also one that when properly planned and implemented can be a smooth and worthwhile process that delivers results, such as better business insights, improved efficiency and scaling your business with ease.

This guide is designed to explore how migrating from Sage 200 to true cloud solution, Sage Intacct is the logical next step.

Why Upgrade from Sage 200?

As a business evolves and grows, their financial management needs change. Sage 200 customers with growing businesses need a sophisticated, powerful financial management solution capable of overcoming common challenges they face, including:

- A lack of remote access to data, impacting decision making and collaboration.
- Manually managing multiple companies in multiple currencies is becoming more complex and taking longer.
- Complex billing processes becoming harder to manage, particularly subscriptions.
- Better, faster insights are needed into the organisation's financial position.

Scaling a business without incurring high IT infrastructure, support and maintenance costs requires a modern, intuitive financial management system that supports growth, improves efficiency and delivers a better user experience.



Why Choose Sage Intacct?

Sage Intacct's robust, cloud infrastructure makes it easy to access and share data across the organisation. Intacct simplifies the most complex of accounting processes through automation, integration with key business systems and provides superior visibility into the financial health of the business.

Sage Intacct is consistently rated number 1 in the cloud financial management sector, receiving top ratings for customer satisfaction, product direction and ease of use – the natural next step for Sage 200 users seeking to streamline their accounting processes and scale their business without disruption or barriers.



The below comparison table shows some of the differences between the two systems:

|  | Sage 200 | Sage Intacct |
|---|---|---|
| Multi-entity Management | <ul style="list-style-type: none"> • On-premises solution with separate databases and logins for each entity. • Not designed with multiple user capabilities. • Slow consolidations that take hours or days to complete using excel spreadsheets. | <ul style="list-style-type: none"> • Single solution with one login to manage all entities from a single system. • Multi-user friendly. • Provides a single consolidated view of multiple entities. • New entities easily added and multiple entities automatically consolidated in minutes or hours. |
| Reporting | <ul style="list-style-type: none"> • Multiple systems and spreadsheets needed for complete reporting. • Working longer or unsociable hours to prepare reports. • Lack of consolidated reporting across multiple entities. | <ul style="list-style-type: none"> • Create complex reports using accounting and dimension groups in real-time. • Permission-based access to configurable reporting so all stakeholders can access the information specific to them. |
| System Integration | <ul style="list-style-type: none"> • Poor integration between business systems that costs around x10 more than Sage Intacct. • Challenges with data syncing and potential for data errors or duplication when transferring between systems. • Manual workarounds often required. | <ul style="list-style-type: none"> • Open API connectivity offering superior flexibility costing around 1/10 of Sage 200 integration costs. • Integrates with Salesforce and 100's of business systems such as payroll. • More time to reallocate to strategic tasks. |
| Remote Access | <ul style="list-style-type: none"> • Users either need to be physically at a C machine or invest in an expensive remote access server. | <ul style="list-style-type: none"> • Access via web-browser anytime, anywhere with 99% uptime and secure data handling. |
| Business Insights | <ul style="list-style-type: none"> • Limited reporting capabilities resulting in delayed access to information. • Decision making affected and based on historical data. | <ul style="list-style-type: none"> • Real-time dimensional reporting with role-based access for all stakeholders. • Intuitive Dashboards delivering a quick visual display of relevant information in graphs, charts and other media. |
| IT Costs & Upgrades | <ul style="list-style-type: none"> • IT maintenance and support costs are expensive to cover servers, maintenance and upgrade implementation. • Users potentially running outdated or on older versions of the system due to associated upgrade costs. | <ul style="list-style-type: none"> • Robust cloud-based IT infrastructure that expands with a business without additional costs. • Automatic quarterly upgrades performed without re-implementation or additional costs. |
| Scalability & Performance | <ul style="list-style-type: none"> • Limitations in system functionality to manage increased volumes in transactions or entities – “Outgrowing the System”. | <ul style="list-style-type: none"> • Industry standard database that scales seamlessly with usage. • Optimal system performance even with high transaction volumes or user traffic. |

The Intacct Impact

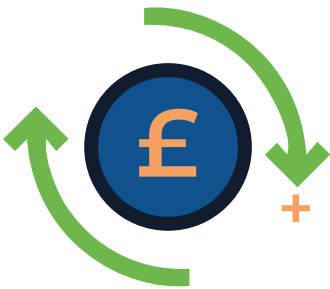
Migrating from Sage 200 to Sage Intacct has delivered exceptional results for customers, who have experienced benefits including:



Saving 8 hours per month through automated financial reporting.



A 36% improvement in productivity on AP inputting.



ROI of 250% achieved.



Four entities consolidated in minutes instead of hours.



Currency conversions in real-time that used to take a whole day.



Month end close time reduced from 15 days to 3 days.



Invoice creation time reduced by 60%.

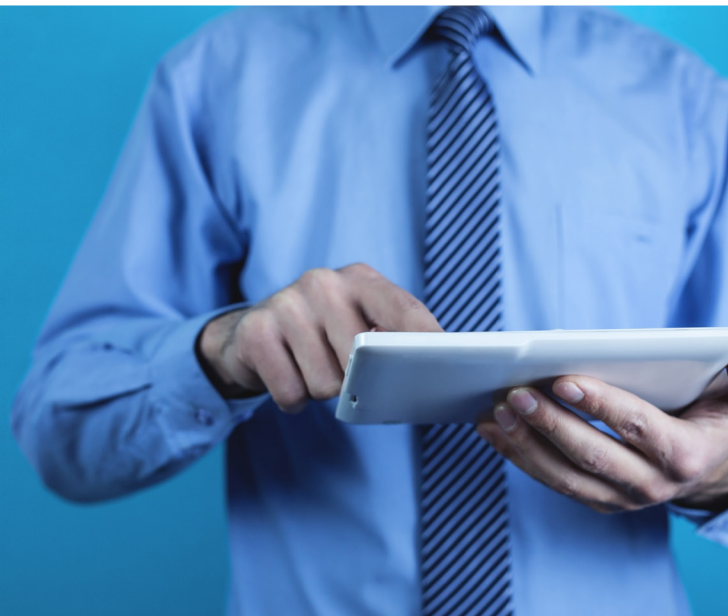
Why choose Acuity Solutions as your Sage Intacct Partner?

Working with an experienced Sage partner like us will make migrating solutions easier. Our 25+ years of experience and expertise in implementing Sage products, within a variety of businesses, has positioned us as a leading Sage Business Partner with in-depth product knowledge and a passion for helping our customers overcome their accounting challenges.

We promise:

- Support at every stage of your migration planning and journey.
- Expert support from our fully qualified team of Sage Intacct team in partnership with you, taking care of everything from data mapping to system configuration, customisation and training.
- Continuous aftercare and support throughout your Intacct & Acuity lifetime.
- Fixed-price implementations on all projects (the only UK partner offering this).
- Multiple payment options to spread the cost of your investment.
- Support as a Service

We utilise our expertise to provide customers with a smooth, streamlined and straightforward migration, minimising disruption as you embark on your financial management transformation.



What's Your Next Step?

Take the next step in upgrading from Sage 200 to Sage Intacct by finding out what benefits it can deliver in your business.

Get in touch with us to arrange a chat with one of our friendly Sage Intacct experts.

Prefer to view a demo in your own time? **Watch our on-demand Sage Intacct Demo [here](#).**





Still have questions?

Get in touch!

+44 (0)1932 237110

marketing@acuitysolutions.co.uk

www.acuitysolutions.co.uk